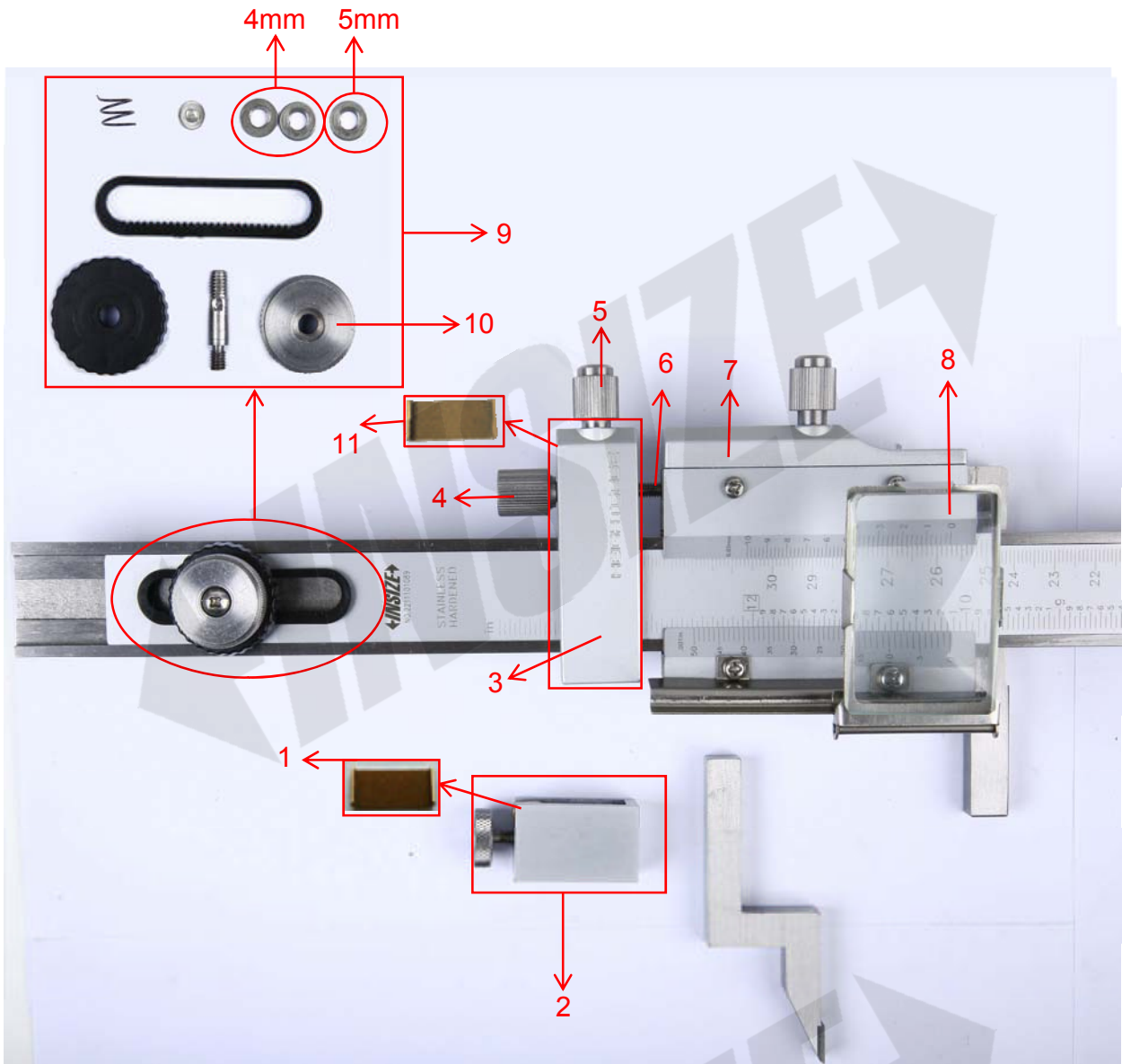


## Spare parts for vernier height gage 1250 series



Part NO.	Code	Description
1	SP-CU-SPACER-1250-300	Spacer for 1250-300
2	SP-CLAMP-1250-300	Clamp (-300/-450/-600)
	SP-CLAMP-1250-1000	Clamp (-1000)
3	SP-FINEADJ-1250-1	Fine adjustment frame (-300, not include part NO.11)
	SP-FINEADJ-1250-2	Fine adjustment frame (-450 / -600, not include part NO.11)
	SP-FINE ADJ-1250-300	Fine adjustment frame ( include part NO.3,5,11)
	SP-FINE ADJ-1250-600	Fine adjustment frame ( include part NO.3,5,11)
4	SP-PROTRACTOR-LOCK-1250	Protractor lock screw
5	SP-LOCK-1250-300	Locking screw
6	SP-SCREW-LOCK-1250	Roller screw
7	SP-PLATE-1250-1	Plate (-300)
	SP-PLATE-1250-2	Plate (-450/-600)
8	SP-MAGNIFIER-1250	Magnifier
9	SP-SCALE-ADJ DEVICE-1250	Main scale adjustment device (set, the two 4mm gasket is not necessary for the size over 300mm )
10	SP-CHITIAO-LOCK-1250	Rack locking nut
11	SP-CU-SPCER-1250-1	Spacer for fine adjustment frame(-300)
	SP-CU-SPCER-1250-2	Spacer for fine adjustment frame(-450/-600)