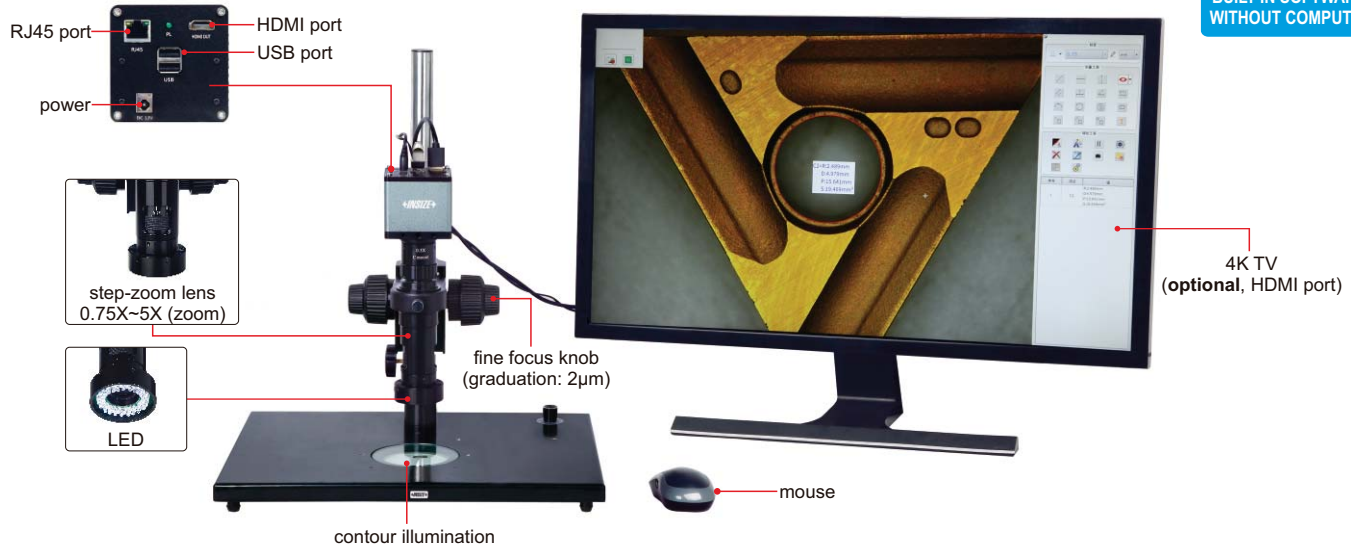


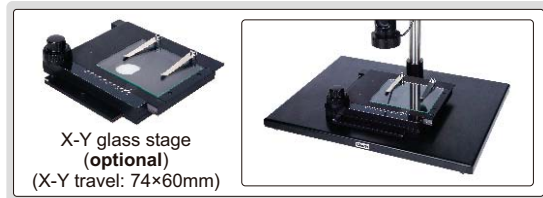
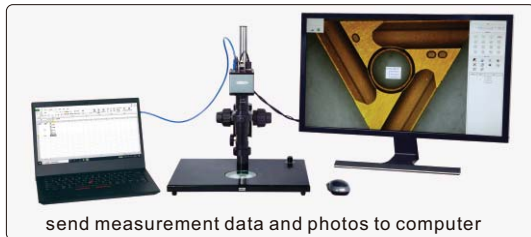
# HIGH-DEFINITION MEASURING MICROSCOPE

## CODE ISM-DL500 \*\*

ATTENTION: PLEASE MAKE CONFOCAL ADJUSTMENT AFTER CHANGING CAMERA ADAPTERS OR AUXILIARY OBJECTIVES



- 5 megapixel high-definition image
- Built-in software without computer, operated by mouse
- Take pictures, save to USB flash disk
- Measurement results can be sent to Excel
- Automatic white balance and exposure
- Send photos and measurement data via ethernet(TCP/IP)
- Name photos and measurement data files with serial number of workpieces read by scanner



0.5X camera adapter (included)



1X camera adapter (optional)



1X auxiliary objective (included)



2X auxiliary objective (optional)

### STANDARD DELIVERY

Main unit	1pc
0.5X camera adapter	1pc
1X auxiliary objective	1pc
Calibration plate	1pc
16G USB flash disk	1pc
White/black plate	1pc
Mouse	1pc
Power adapter	1pc

### SPECIFICATION

Magnification (on 28" TV)	30X~200X
Sensor	1/1.8" CMOS
Pixel	5M
Resolution	3072×1728
Frame rate	60fps
Output	HDMI
Power supply	power adapter and 220V, 50/60HZ **
Dimension (L×W×H)	570×300×430mm

### OPTIONAL ACCESSORY

1X camera adapter	ISM-DL-CA1X
2X auxiliary objective	ISM-DL-OB2X
X-Y glass stage (travel: 74×60mm)	ISM-DL-STAGE
28"4K TV	7313-TV28
Scanner and hub	7316-SCAN1
LED light	Page 275
Auxiliary objective	Page 276

\*\* Add "-U" on code No. when power supply is 110V, 50/60Hz

To be continued

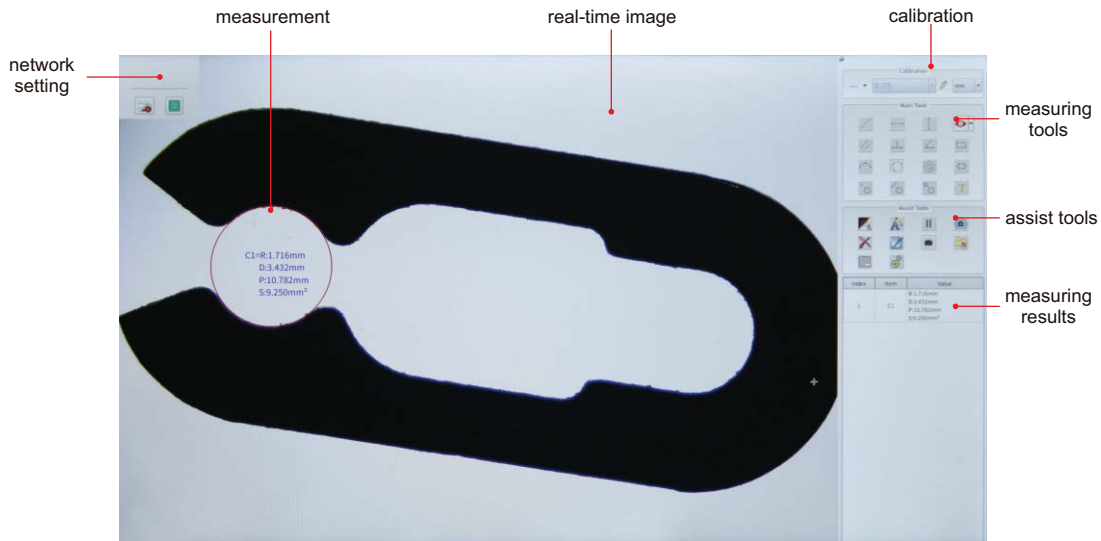
**MAGNIFICATION, FOCUS DISTANCE AND VIEW FIELD (ON 28" TV)**

Auxiliary objective	Specification	Camera adapter	
		0.5X (included)	1X (optional)
1X (included)	Magnification	30~200X	60~400X
	Focus distance	70±2mm	70±2mm
	View filed	16.5×11.5~2.5×1.7mm	8.2×5.7~1.3×0.9mm
2X (optional)	Magnification	60~400X	120~800X
	Focus distance	29±2mm	29±2mm
	View filed	8.2×5.7~1.3×0.9mm	4.1×2.8~0.6×0.4mm

**MEASURING ACCURACY**

Objective magnification	Image magnification (on 28" TV)	Measuring accuracy
0.75X	30X	±6µm
1X	40X	±6µm
1.5X	60X	±5µm
2X	80X	±5µm
2.5X	100X	±5µm
3X	120X	±4µm
3.5X	140X	±4µm
4X	160X	±3µm
4.5X	180X	±3µm
5X	200X	±3µm

**SOFTWARE**

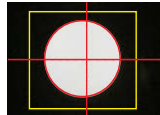


- Language: English
- Output to Excel
- Edge-detection:

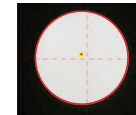
Point tool



Box tool



Click tool



▪ **Measurement tools:**

- |  |   |   |
|--|---|---|
| measure length of line or distance between two points                | measure length of line or distance between two points in horizontal direction | measure length of line or distance between two points in vertical direction |
| measure angle from horizontal line                                   | measure angle from vertical line  | measure angle of two lines  |
| measure distance between two parallel lines                          | measure distance between three parallel lines                                 | measure distance between multiple parallel lines                            |
| measure distance between point and line                              | measure radius, length and angle of arc                                       | measure girth and area of polygon   |
| measure radius, diameter, girth and area of circle with three points | measure radius, diameter, girth and area concentric of circles                | measure length, width, girth and area of rectangle                          |
| measure minimum distance between point and circle                    | measure distance between point and center of circle                           | measure maximum distance between point and circle                           |
| measure minimum distance between line and circle                     | measure distance between line and center of circle                            | measure maximum distance between line and circle                            |
| measure minimum distance between two circles                         | measure center distance between two circles                                   | measure maximum distance between two circles                                |
| add text   | measure radius, diameter, girth and area of circle with two points            | cross hair  |