

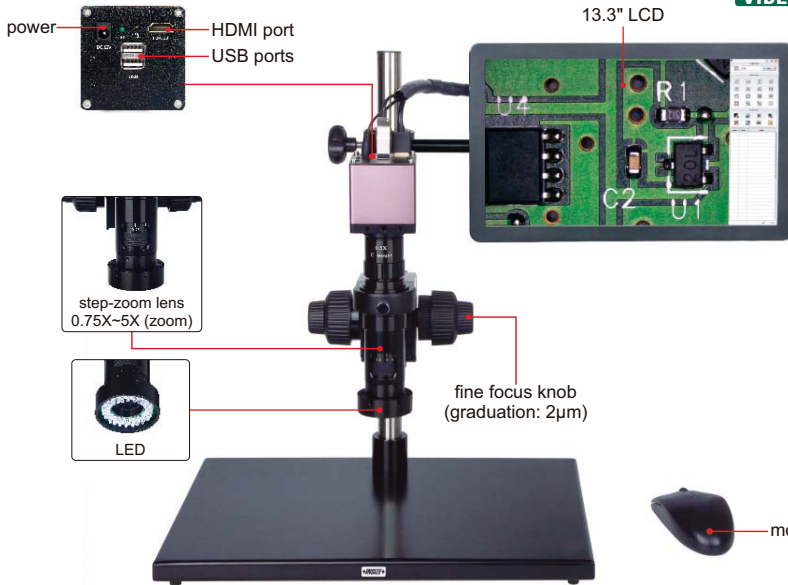
## DIGITAL MEASURING MICROSCOPE (WITH DISPLAY)



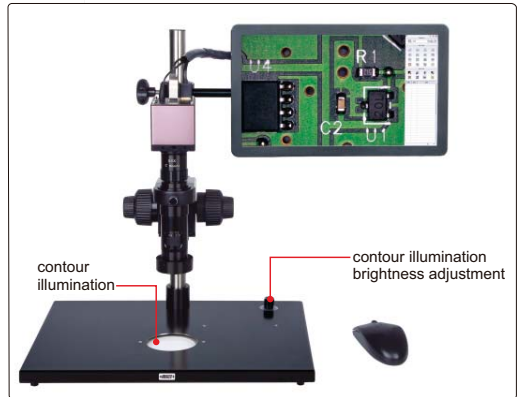
BUILT-IN SOFTWARE WITHOUT COMPUTER

MEASUREMENT

TAKE PICTURES



ISM-DL300 (without contour illumination)



ISM-DL301 (with contour illumination)

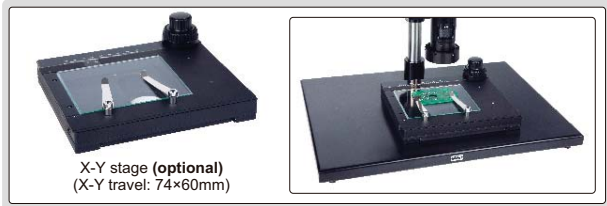
- 1080P high-definition image
- Built-in software without computer, operation by mouse
- Take pictures, saved to USB flash disk
- Measurement results can be output to Excel
- Automatic white balance and exposure
- Brightness, contrast ratio, gain are adjustable



calibration plate (included)



16G USB flash disk (included)



X-Y stage (optional)  
(X-Y travel: 74×60mm)



0.5X camera adapter (included)



1X auxiliary objective (included)



1X camera adapter (optional)



2X auxiliary objective (optional)

### MEASURING ACCURACY

| Magnification | Measuring accuracy* |
|---------------|---------------------|
| 15X           | ±8µm                |
| 30X           | ±6µm                |
| 50X           | ±6µm                |
| 80X           | ±4µm                |
| 100X          | ±4µm                |
| >100X         | ±4µm                |

\* When measuring the contour of workpieces, please select ISM-DL301 for high accuracy.

### SPECIFICATION

| Code              | ISM-DL300 (without contour illumination) | ISM-DL301** (with contour illumination) |
|-------------------|--|---|
| Magnification     | 15X~100X                                 |   |
| Sensor            | 1/2" CMOS                                |   |
| Pixel             | 2M                                       |   |
| Resolution        | 1920×1080                                |   |
| Frame rate        | 60fps                                    |   |
| Output            | HDMI                                     |   |
| Power supply      | power adapter                            | power adapter and 220V, 50/60Hz**       |
| Dimension (L×W×H) | 570×300×430mm                            |   |
| Weight            | 6.5kg                                    |   |

\*\* Add "-U" on code No. when power supply is 110V, 50/60Hz

### MAGNIFICATION, FOCUS DISTANCE AND VIEW FIELD

| Auxiliary Objective | Specification  | Camera adapter    |                   |
|---------------------|----------------|-------------------|-------------------|
|                     |                | 0.5X (included)   | 1X (optional)     |
| 1X (included)       | Magnification  | 15~100X           | 30~200X           |
|                     | Focus distance | 70±2mm            | 70±2mm            |
|                     | View filed     | 16×11~2.5×1.6mm   | 7.8×5.3~1.2×0.8mm |
| 2X (optional)       | Magnification  | 30~200X           | 60~400X           |
|                     | Focus distance | 29±2mm            | 29±2mm            |
|                     | View filed     | 7.8×5.3~1.2×0.8mm | 3.8×2.7~0.6×0.4mm |

To be continued

Continued from previous page

## DIGITAL MEASURING MICROSCOPE (WITH DISPLAY)

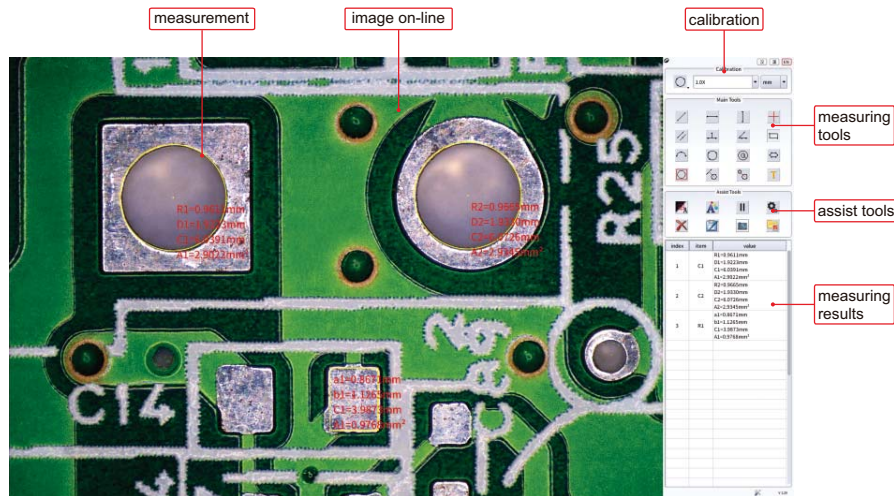
### STANDARD DELIVERY

|                        |     |
|------------------------|-----|
| Main unit              | 1pc |
| 0.5X camera adapter    | 1pc |
| 1X auxiliary objective | 1pc |
| Calibration plate      | 1pc |
| 16G USB flash disk     | 1pc |
| White/black plate      | 1pc |
| Mouse                  | 1pc |
| HDMI cable             | 1pc |
| Power adapter          | 2pc |

### OPTIONAL ACCESSORY

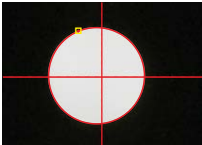
|                             |              |
|-----------------------------|--------------|
| 1X camera adapter           | ISM-DL-CA1X  |
| 2X auxiliary objective      | ISM-DL-OB2X  |
| X-Y stage (travel: 74×60mm) | ISM-DL-STAGE |

### SOFTWARE

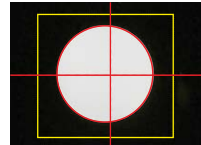


- Language: English
- Output to Excel
- Edge-detection:

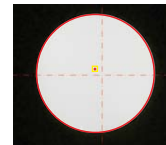
Point tool



Box tool



Click tool



#### Measurement tools:

- |  |   |   |
|--|---|---|
| measure length of line or distance between two points                | measure length of line or distance between two points in horizontal direction | measure length of line or distance between two points in vertical direction |
| measure angle from horizontal line                                   | measure angle from vertical line  | measure angle of two lines  |
| measure distance between two parallel lines                          | measure distance between three parallel lines                                 | measure distance between multiple parallel lines                            |
| measure distance between point and line                              | measure radius, length and angle of arc                                       | measure girth and area of polygon   |
| measure radius, diameter, girth and area of circle with three points | measure radius, diameter, girth and area concentric of circles                | measure length, width, girth and area of rectangle                          |
| measure minimum distance between point and circle                    | measure distance between point and center of circle                           | measure maximum distance between point and circle                           |
| measure minimum distance between line and circle                     | measure distance between line and center of circle                            | measure maximum distance between line and circle                            |
| measure minimum distance between two circles                         | measure center distance between two circles                                   | measure maximum distance between two circles                                |
| add text   | measure radius, diameter, girth and area of circle with two points            | cross hair  |