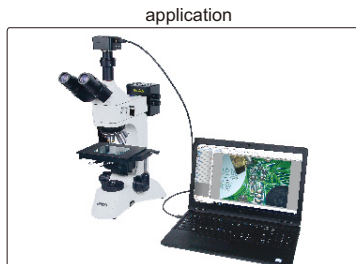


USB CAMERA AND SOFTWARE CODE ISM-CM63

**ATTENTION: ADAPTERS ARE NEEDED
ACCORDING TO MICROSCOPES**



C-mount port



application



adapter 0.5X (optional)

- To be used with computers
- Sony Exmor back-illuminated CMOS sensor
- USB3.0 transfer
- Automatic exposure, gain adjustment, white balance, chrominance adjustment, saturation adjustment, gamma correction, luminance adjustment, contrast adjustment

Software (included)

selectable resolution

histogram
(quantify the distribution of color and brightness)

measurement items

real time gray calibration

black balance
(reduce color difference)

flat field correction
(reduce brightness difference)

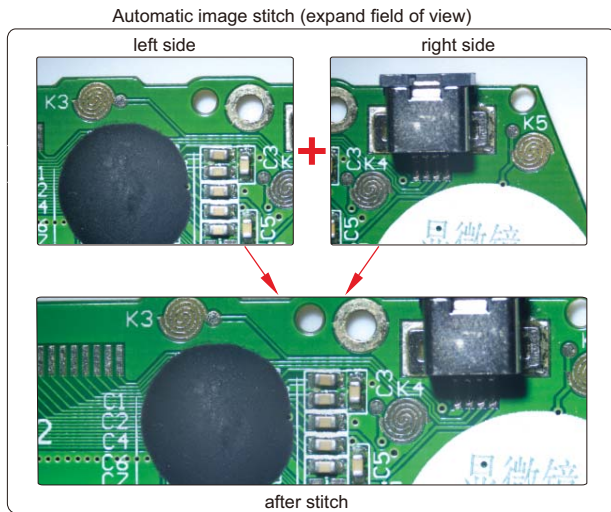
Remove the samples from the field of view. Click the "Capture" button to obtain the background for flat field correction. Check "Enable" button to perform the flat field correction function.

dark field correction
(reduce thermal noise)













Cover the lens, and then push the "Capture" button to capture the dark field. Check the "Enable" button to enable "Dark Field Correction".

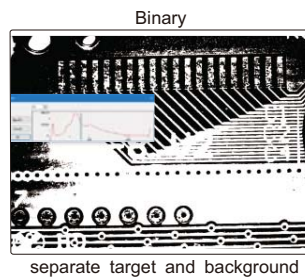
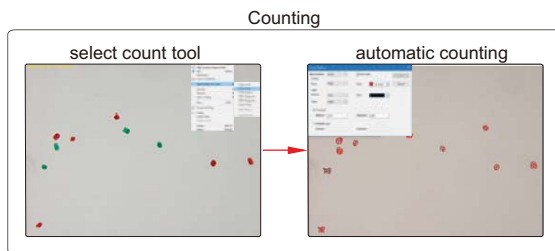
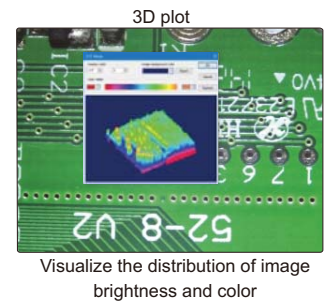
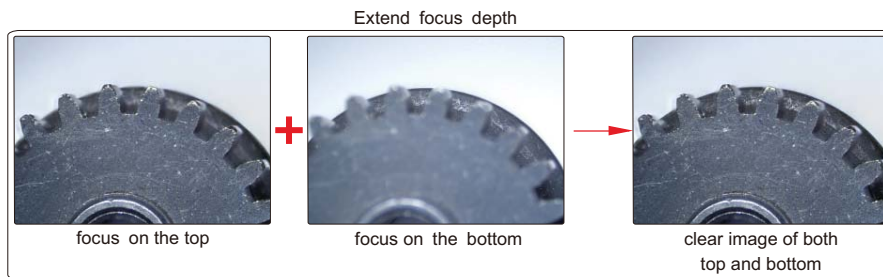
The software can control image completely, including measurement, image stitch, extend focus depth, image gray processing, RGB histogram observation, image color sampling, 3D plot(3D representation of image intensity), image exposure, white balance, black balance, image bit depth, flat field correction and dark field correction, etc.

Continued from previous page



Measurement tools:

-  measure length of line or distance between two points
-  measure rectangle
-  measure angle
-  measure radius, girth and area of circle
-  measure axis lengths, girth and area of ellipse
-  calibration
-  measure distance between two parallel lines
-  measure width and diameter of ring
-  measure diameter, length, perimeter angle of arc
-  measure area of polygon
-  measure center distance between two circles
-  measure length of open curve



SPECIFICATION

Sensor(back-up)	1/1.8" CMOS
Resolution	6.3M
Pixel	3072×2048
Single pixel size	2.4×2.4μm
Spectral range	380-650nm (with infrared cut filter)
Frame rate	30fps
Sampling average	1×1
Exposure time	0.1ms~15s
Power supply	USB port
Weight	400g

COMPUTER REQUIREMENT

Operation system	Windows/7/8/10
CPU	Intel Core 2 2.8Hz or above
Memory	2GB or above
USB port	USB3.0 (Recommand) or USB2.0
Display	17" or above

STANDAER DELIVERY

Camera (USB cable included)	1 pc
Software	1 pc

OPTIONAL ACCESSORY

Adapter 0.5X	ISM-MAS-ADAPTER
--------------	-----------------