

DIGITAL SOUND LEVEL METER

CODE 9351-130

- Automatically select best range: 30~80dB, 40~90dB, 50~100dB, 60~110dB, 70~120dB, 80~130dB
- Over range indicator
- Real time, average, maximum modes
- Memory 16000 measurement values
- AC signal output: 0.707 Vrms at FS, impedance approx. 600Ω
- DC signal output: 10mV/dB, impedance approx.100Ω
- Automatic power off

SPECIFICATION

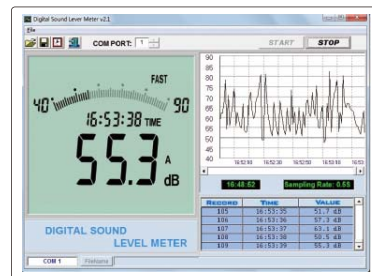
| | |
|---------------------|--------------------------------------|
| Measuring range | 30~130dB |
| Accuracy | ±2dB |
| Resolution | 0.1dB |
| Sampling time | 0.5s for digital, 0.05s for analogue |
| Response time | fast: 125ms, slow: 1s |
| Frequency | 30Hz~8KHz |
| Frequency weighting | A/C |
| Microphone | electret condenser type |
| Output | RS232, AC/DC |
| Power supply | 6×AAA batteries |
| Dimension | 265×80×69mm |
| Weight | 317g |



software CD
(included)



DATA
OUTPUT



software (included), display measurement values and graph, save and output data

STANDARD DELIVERY

| | |
|--------------------------|------|
| Main unit | 1pc |
| RS232 cable and software | 1pc |
| Output connector | 1pc |
| Battery (AAA) | 6pcs |