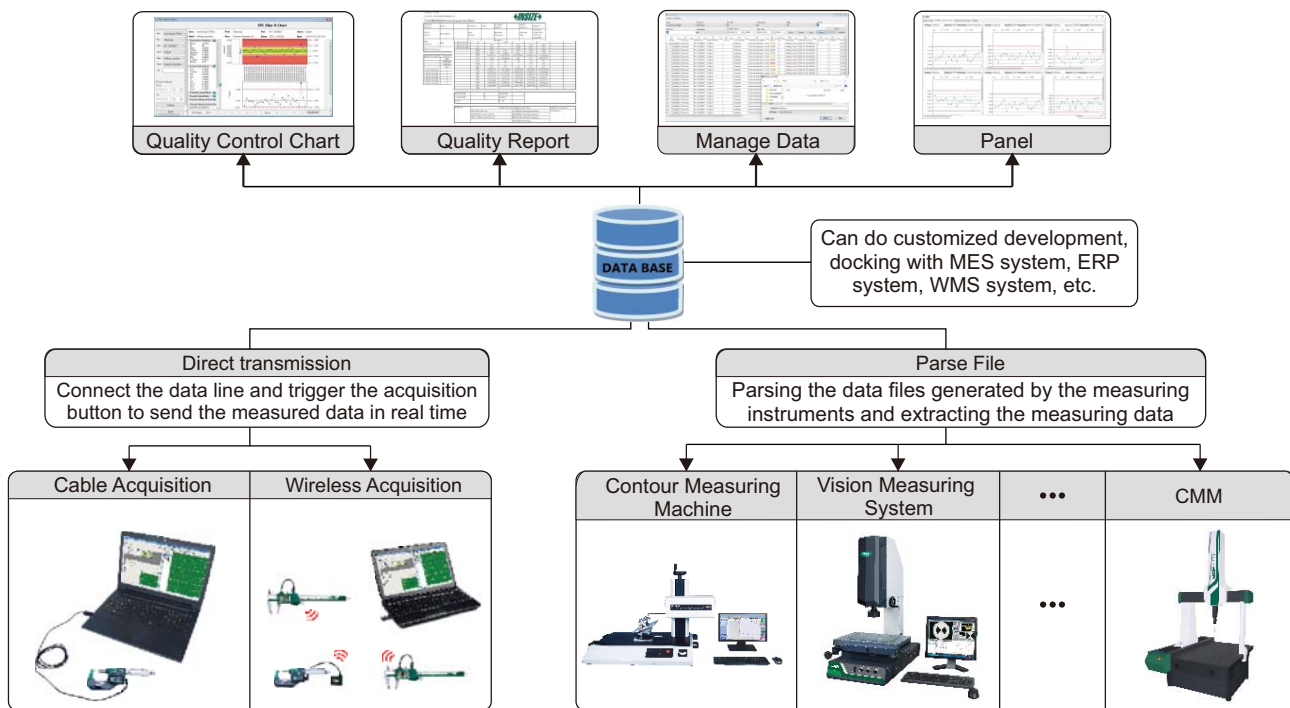
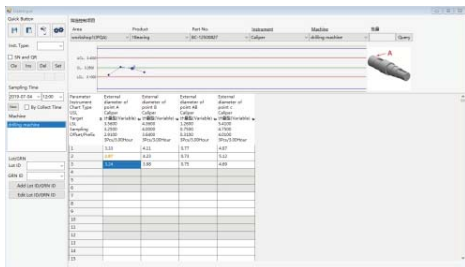


MEASURING DATA MANAGEMENT SOFTWARE



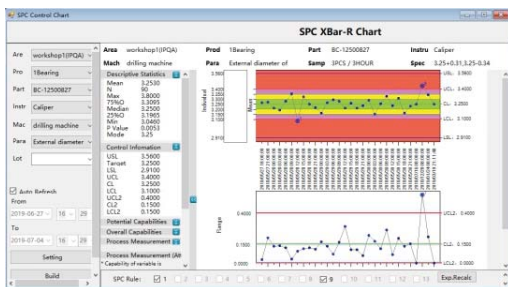
Direct Transmission

- Measurement: Data are collected wirelessly or wirelessly, and the measurement data can be judged automatically according to tolerance.
- Sampling: Support multiple sampling methods; Sampling by time, by batch, etc.
- Storage: All data are stored in the database, and related information such as person, machine, material, method, link, etc. (e.g. production equipment, product batches, measuring instruments, etc.) for easy traceability and inspection
- Extension: Can do secondary development, docking with MES system, ERP system, WMS system, etc.



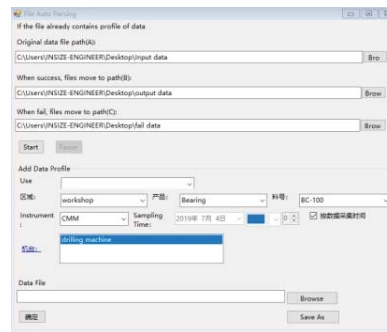
Quality Control Chart

- Through graphical analysis of data trends, process capabilities, etc., to determine whether the production process is controlled, make pre-judgments and adjustments.



Parse Files

- Auto parse file: automatic extraction from raw data files generated by measuring instruments necessary data, no manual intervention, data format can meet certain permutation requirements.
- Manual file parsing: manually copy data to the data acquisition interface, file types meet certain requirements.



Quality Report

- According to the requirement, the software can generate quality reports in various Excel formats.



